

# How Funds Reach Your People's Favorite Causes

A look at Benevity's disbursement process



## 1 Select a cause

Choose from nearly 2 million reputable causes all over the world.



## 2 Give or grant



### In Spark

Donations can be made using rewards, or by setting up one-time or recurring donations with a credit card, PayPal, Apple Pay or through payroll. Matches are applied if eligible.

Donate Now

### In Grants

Grants can be set up as a one-time payment or multiple payments over a select period of time.

Pay Now

## 3 Donation Report

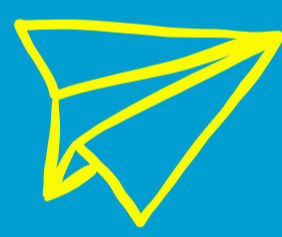
Your company will receive a monthly donation report. If paid by the 15th of the month, the funds will be sent to causes. If not paid by the 15th, we'll alert you that funds have not been received and disbursement to the cause will take place during the next disbursement cycle following payment.



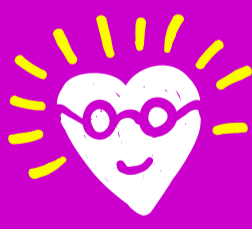
## 4 Disbursement

Your company is one of many using the Benevity platform to power giving and granting programs.

So, we put all of your donations and grants together with all the other funds going to a specific cause and send them a single, aggregated monthly disbursement (electronically whenever possible).



## What does this mean for causes?



### Efficient Delivery of Funds

Instead of receiving thousands of individual checks, causes receive a single, aggregated payment which reduces administration and processing costs.

And we disburse 90% of those funds electronically, eliminating an estimated 450,000 checks from being mailed and processed every year. That's important because, statistically, 4% of checks get lost. That's \$64 million in donations each year that would never make it to causes.



### More Time for Their Mission

Causes receive access to millions of supporters in corporate giving programs, streamlined donation disbursements, automatic donation matching, automated tax receipting, monthly consolidated electronic payments, donor reports and dedicated support when they receive donation's through Benevity's platform.

This lessens their administrative burden and helps causes get closer to realizing their important social missions.